

Gate Installation Guide

Product Structure Diagram Components:

1. Horizontal Gate Frame



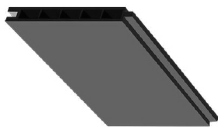
2. Structural Angle Bracket



3. Vertical Gate Frame



4. WPC Boards



6. L Bracket



7. Vertical Gate Frame (features Lock Hole)



9. Gate Lock



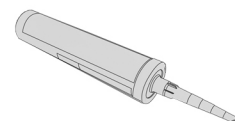
10. Screws



11. Hinges



13. Glue



8. Horizontal Gate Frame



6. Decorative Strip



5. Edge Strip



12. Gate Stop

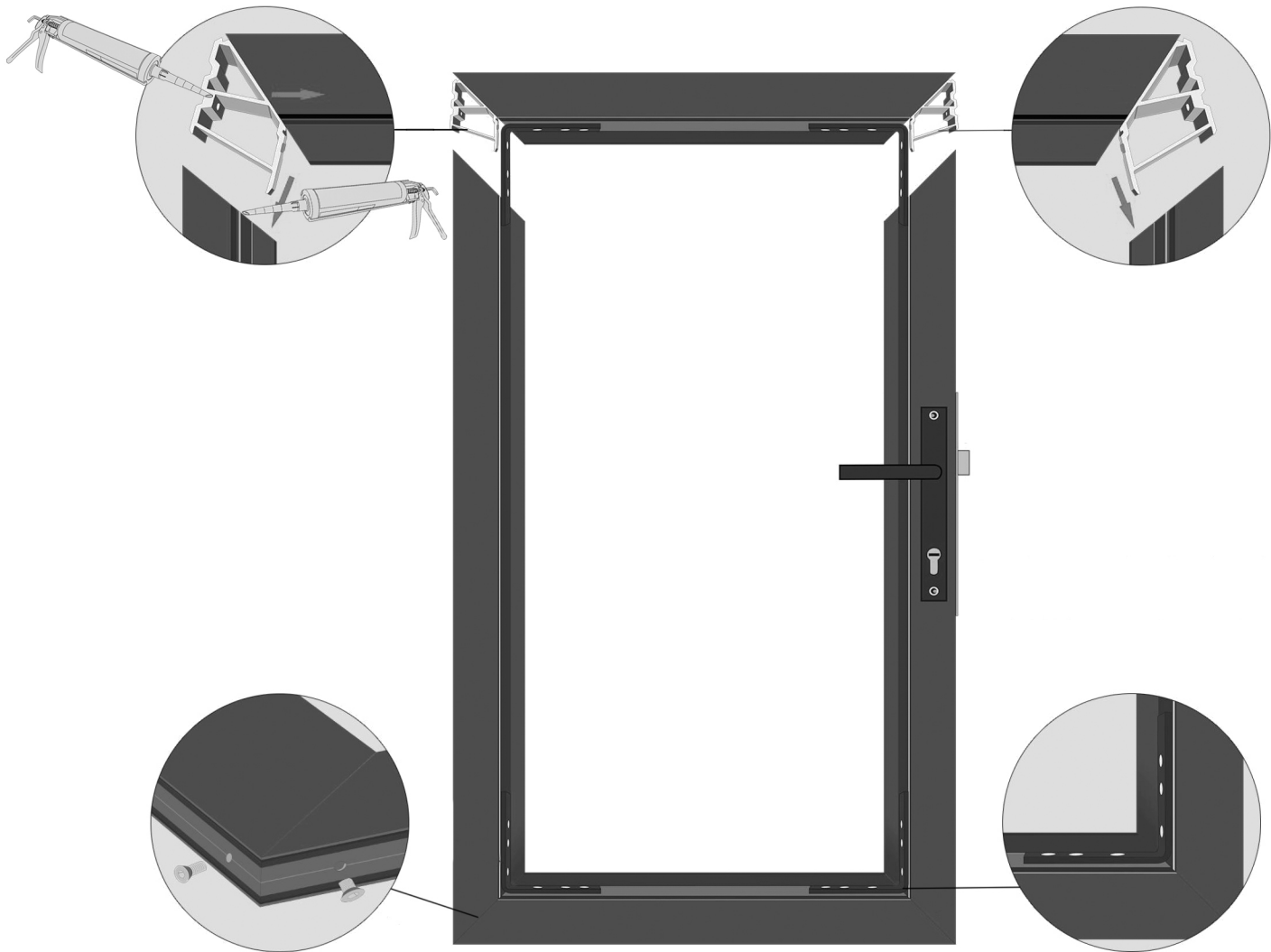


Gate Installation Guide

Step 1: Assembling the Gate Frame

1. Apply glue to the **Structural Angle Brackets** and the interior of both **Gate Frames** before inserting the bracket.

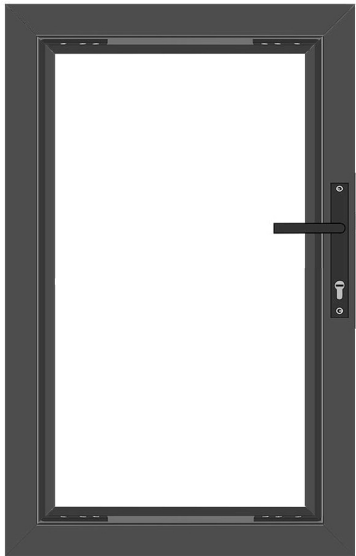
2. Insert the **Structural Angle Brackets** into the **Gate Frame**.



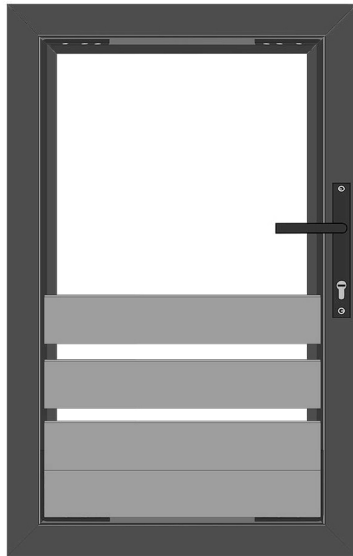
3. Ensure the assembled **Gate Frame** is square by measuring diagonals, and fasten the connections with screws.

4. Fasten the **L Brackets** to the corners and secure them firmly with screws.

Step 2: Assembling the Gate Boards



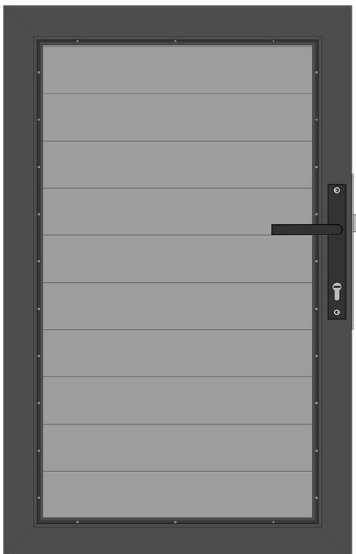
1. Place the assembled **Gate Frame** horizontally.



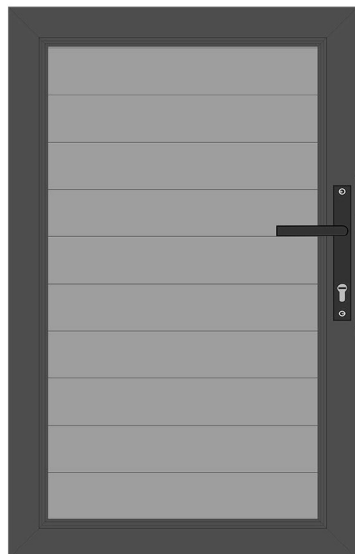
2. Insert the **Composite Boards** into the **Gate Frame**.



3. Remove the **Decorative Strip** from the **Edge Strip**, then insert the **Edge Strip** into the frame using a rubber hammer.

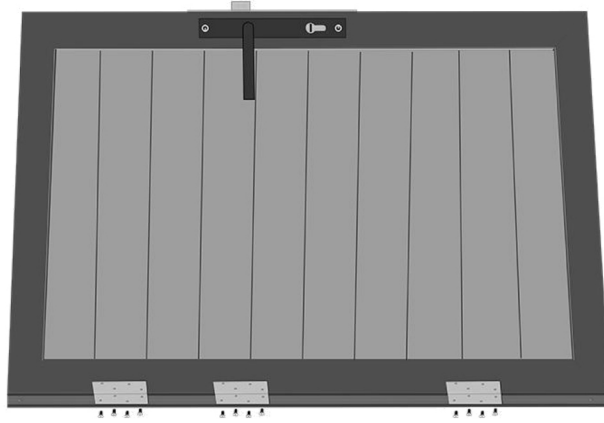


4. Fix each **Edge Strip** with three screws.



5. Knock the **Decorative Strip** into the **Edge Strip** to conceal the screws.

Step 3: Gate Hinge Installation



1. Attach the hinges to the **Gate Frame**.



2. Fix the gate onto the **Post**.

Step 4: Gate Lock Installation

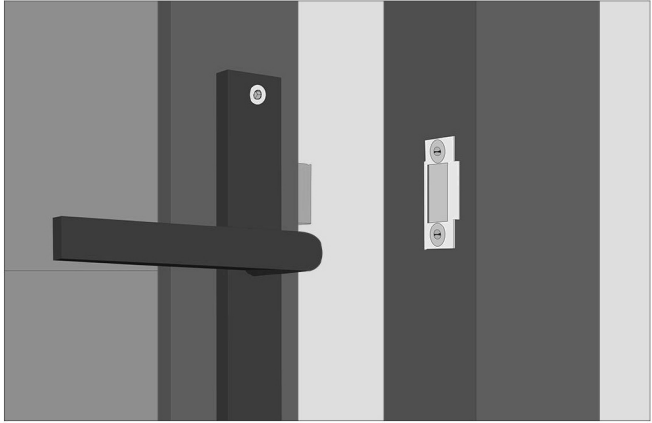


1. Refer to the **Gate Lock Installation Diagram** for structural details.



2. Complete the **Gate Lock Installation**.

Step 5: Installing the Gate on the Post



1. Install the keyhole accessories onto the **Side Post**.



2. Attach the **Gate Stop** to the **Side Post**.

INSTALLATION COMPLETE.